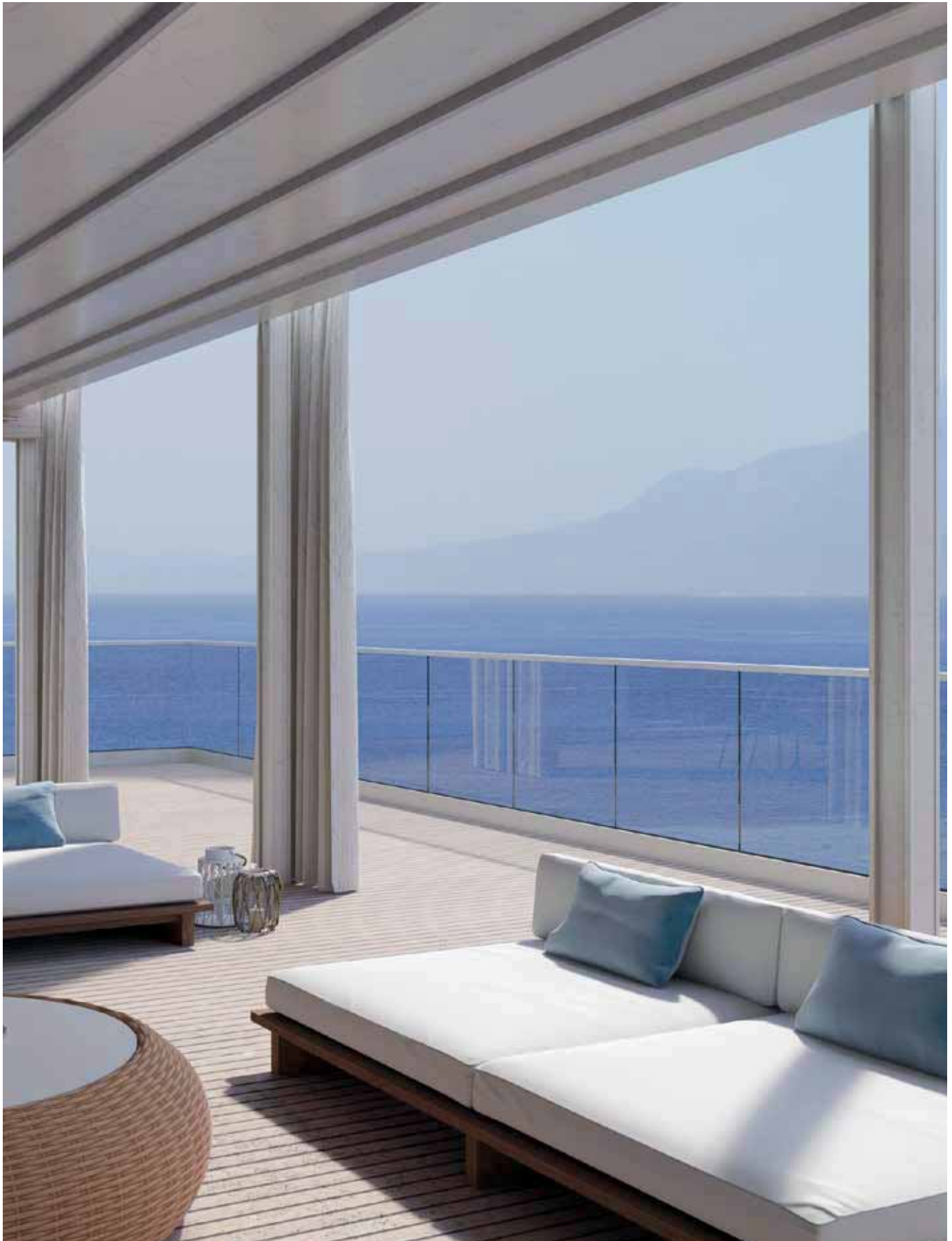


B-1101

€ ▶ H.19

- Balastra con cunei.
Fissaggio a pavimento con aletta spostata.
- Railing fixing with wedges.
Floor installation with side fixing.
- Railing Befestigung mit Keilen.
Bodenmontage mit seitlicher Befestigung.

PAVIMENTO
LATERALE





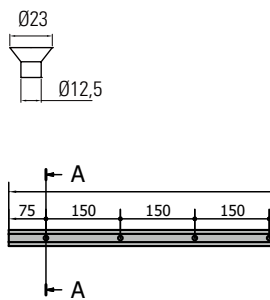
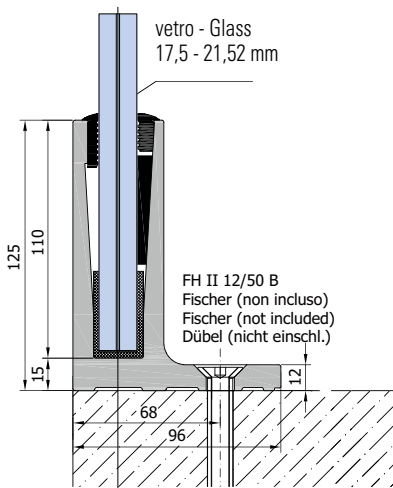
PAVIMENTO
LATERALE

COMPONENTI / COMPONENTS / EINZELTEILE



- B-1101**
- Profilo balastra
 - Railing profile
 - Profil für Geländer

- B-1102 (x 8+8) / B-1103 (x 10+10)**
- Set cunei e guarnizioni
 - Set Wedges and gaskets
 - Set Keilen und Dichtungen



xfb032

Set completo/mt L-3000 mm Complete set/mt L-3000 mm Komplett-Set L-3000 mm	FIN. FIN. OB.	Vetro Glass Glas	Testato spinta Test side force Getestet Seitenkraft	Classe Class IT Klasse	Certificato Certificate Zertifikat
B-1101 SET 1,5KN 8	AN	8+8 1,52 pvb	150 kg	*1	1 kN/m = 100 kg/m
B-1101 SET 2KN 10	AN	10+10 1,52 pvb	300 kg	2	2 kN/m = 200 kg/m

* non certificato - not certificated - nicht Zertifiziert

SET COMPOSTO DA SET CONSISTING OF SET BESTEHEND AUS	FIN. FIN. OB.	B-1101 SET 1,5 KN 8	B-1101 SET 3 KN 10
B-1101	AN	1 pzSt/pcs L = 3000 mm	1 pzSt/pcs L = 3000 mm
B-1102	-	1	-
B-1103	-	-	1